

Japan Classic Live For the United Nations

Classic Live is a non-profit organization with co-sponsorships from the Japanese Prime Minister's office, Foreign, Education, Environment ministries and national NGOs, in addition to funding support from government and private foundations. Classic Live will celebrate its 10th anniversary with this years performance. Over the past ten years Classic Live has performed throughout Japan, Asia, Europe and the US. In 2008, they performed in cooperation with G 8 Tokkai Summit and received a letter of appreciation from the Prime Minister of Japan.

Directions: From New York City

Take I-495 (Long Island Expressway) east to Exit 70, then turn right on County Road 111; follow the signs for State Route 27 East/Montauk - Sunrise Highway. Take Route 27 East (which becomes County Road 39) and proceed 19 miles to Southampton Campus. Make right at the traffic light onto Tuckahoe Road. Go past the first entrance on Tuckahoe Road. Turn right at the next entrance.

From the South Shore

Take the Belt Parkway east, keep left to Exit 25A toward Eastern Long Island. The Belt Parkway becomes Southern State Parkway. At Exit 40, take Robert Moses Causeway south toward ocean beaches. Take Exit RM1 toward Route 27 East (Sunrise Highway). Follow directions from Sunrise Highway (above).

For more information Contact:

Leonard Ziemkiewicz

631 632 5152

leonard.ziemkiewicz@stonybrook.edu

Fine Arts Building

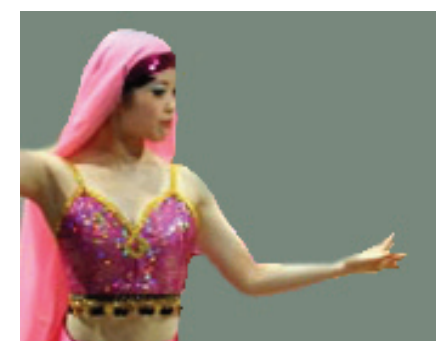
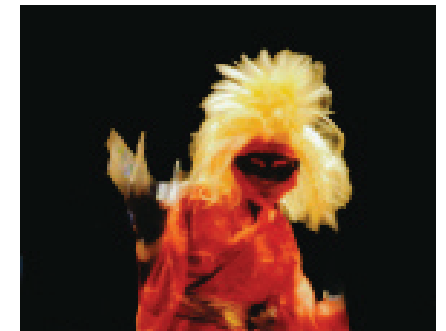
239 Montauk Highway

Southampton, NY 11968



STONY BROOK
SOUTHAMPTON
State University of New York

“Our Blue Planet: Will it Survive Till Tomorrow?”





Japan Live Classic

The Performance

A blend of Japanese music and the music of Gershwin, Beethoven, Bach, Mozart; accompanied by a mix of traditional and modern dances of Japanese and western origin.

It will be a performance of about 90 minutes with three acts. The year is 2100...

Act I Performed against a background of changing images of the beautiful scenes of the blue planet earth, climate change, global warming, melting of polar ice, Hurricane Katrina, earthquake in Japan, atomic bomb blasts in Nagasaki and Hiroshima, etc. - will be a recalling people's wisdom throughout the millennium and querying how, what and where it all went wrong?



Act II Recollects a United Nations setting in 2009, nearly one hundred years ago, where delegates used to debate over what should be the response options, giving priority to their respective national interests, rather than global interest.

Act III Presents a strong message that all countries, must come together and take all necessary steps now in 2009, and without further delay to prevent the ecological and human disasters that would have happened in the year 2100.

Dean/Vice President Mary Pearl
and the Sustainability Forum
of Stony Brook Southampton
Invite you to attend

“Our Blue Planet: Will it Survive Till Tomorrow?”

A Musical for the Environment

By Japan Classic Live for the United Nations

Avram Theater
Stony Brook Southampton
Tuesday November 3, 2009
At 7pm



Doors Open at 6:30pm
Seating limited first come first serve.